



## PL00133 Series SMD LED 0603 Package Top View

### Features

- \*Dome lens thin package 1.6 x 0.8 x 0.4mm
- \*Low current requirements
- \*High light output
- \*Compatible with IR solder-process
- \*Industry standard footprint
- \*4000 pcs per reel
- \*RoHS compliant

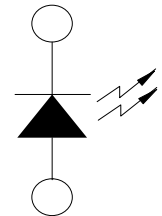
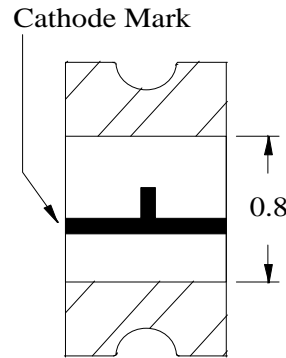
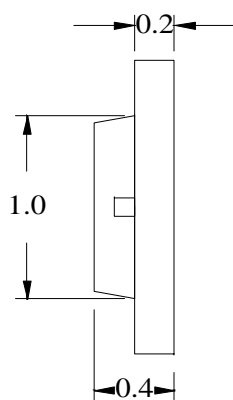
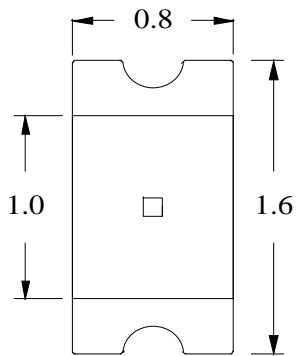
### Absolute Maximum Ratings at T<sub>A</sub> = 25°C

Power Dissipation.....	78W
Reverse Voltage (<10μA) .....	5.0V
Max Forward Current .....	30mA
Peak Forward Current(1/10 Duty Cycle, 0.1ms Pulse Width).....	100mA
Operating Temperature Range .....	-40°C to +85°C
Storage Temperature Range .....	-40°C to +85°C
Reflow Soldering Temperature.....	260°C for 10 seconds

### Electrical & Optical Characteristics at T<sub>A</sub> = 25°C

Part Number	Emitting Color	Chip Material	Dominant Wave Length	Peak Wave Length	Viewing Angle 2θ1/2	Forward Voltage @20mA (V)		Luminous Intensity @20mA (mcd)	
						Typ	Max	Min	Typ
Water Clear Lens			(nm)	(nm)	Deg				
PL00133-WCA03	Ultra-Bright Amber	AlInGaP	605	610	130°	2.1	2.6	57	117

Package Dimensions are in **Millimeters**. Tolerance is ± 0.15mm unless otherwise specified.



### Recommended Soldering Pad Layout

